



Dates for the diary

10th Feb: Y1 trip to London Zoo

11th Feb: EYFS Reading Parents' Workshop: 9am

12th Feb: Y2J class assembly: 9 am

12th Feb: Nursery (pm) trip to Deptford Lounge

16th - 20th February February half term break

23rd Feb: Children back to school

24th Feb: Y4 trip to Butser Farm and KS1 Recycling workshops and assembly

26th Feb: Parent-Teacher meetings 3.50 - 6pm

2nd - 6th March: Book Week

2nd March: Chris Powling author visit (plus book sale after school)

3rd March: Big Foot KS1 drama workshops

4th March: Parent-Teacher meetings 3.50 - 7.30pm

5th March: World Book Day - book character dress up day!

6th March: Big Foot KS2 drama workshops

6th March: PTA Quiz Night, 7.00 for 7.30pm start

KS2 maths workshops: March 9th (Y6), 10th (Y4S), 11th (Y4E), 12th (Y5) and 13th (Y3). All from 9.00 - 9.45 am.

19th March: Y1 class assembly

23rd - 25th March: Y4E on school journey

25th - 27th March: Y4S on school journey

26th March: Y2V class assembly

30th March - 10th April Easter break

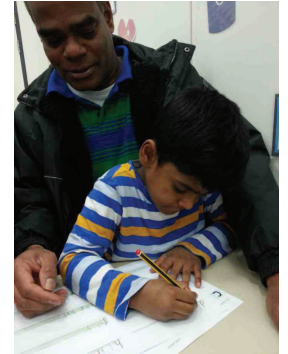
13th April: Children back to school

Thursday 7th May: INSET day

Parent workshops

Thank you so much to all the parents and carers who have attended our handwriting and spelling workshops this week.

We are extremely pleased with the turn out for these workshops - 94% of all KS1 parents/carers came to the workshops this week which is a great way to help support your child with their learning journey.



We are planning more workshops throughout the year, keep an eye on the dates for the diary section to see workshops that are relevant for you/your child.

Our next workshop will focus on supporting reading and is for parents and carers of children in Nursery and Reception and will be next Wednesday (11th February) at 9am.

In the week beginning 9th March we will be running a series of maths workshops for KS2 parents and carers which will focus on the new national curriculum expectations for maths, including explaining our calculation policy.

This will be followed by maths workshops for KS1 children which will be in the week beginning 20th April.

As ever, thank you for your ongoing support and cooperation in working with us to support your children.

PTA Quiz Night

Tickets will be on sale from next week for our annual PTA quiz night. The quiz night is on Friday 6th March. Doors open from 7.00 pm for a 7.30 start. There will be a raffle and food available to buy and you can bring your own drinks. Why not put together a team (maximum of 8 people per team) or come along and join a team on the night. Tickets are just £5 per person (this is an adult only PTA social and fundraising event).



Morning drop off

As you know, Y2 and Y4 line up in the morning underneath the Y6 classroom. This is always a very busy area with all the children, parents, toddlers, buggies etc. To ease the morning congestion, **from Monday 9th Feb, Y4 will line up in the middle playground** (as they do at the end of play/lunchtime). Please encourage your child's independence by allowing them to line up by themselves, carrying all the equipment they need for the day (bookbag, PE kits etc). Thank you.

Calling all scientists... Make a homemade hearing aid!

How do we hear?

Sssh. Can you hear something? We can tell the difference between loud sounds and quiet sounds. You can even tell the difference between your mum's voice and your teacher's voice. But how do we hear?

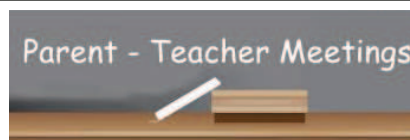
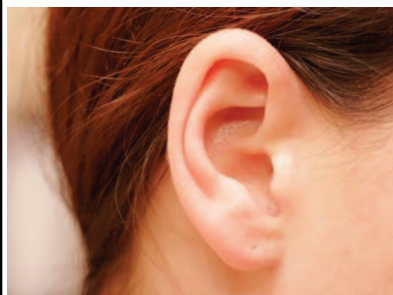
Movement of the air - vibrations - are the basis for all sounds. Different sounds and voices cause different vibrations in the air. Your ears collect these vibrations and convert them to nerve signals. These nerve signals are sent to your brain. Your brain works out what the signals mean - it converts the signals into sound.

What if we could collect MORE sound waves?

Would we be able to hear even more sounds? Try this and see:

1. Roll a large sheet of paper into a cone shape. One end should be as large as possible. The other end should have a hole about the size of a penny.
2. Sellotape the paper so the cone doesn't unravel.
3. Hold the narrow end of the cone to your ear. Don't put the cone in your ear - your ears are very delicate and you don't want to damage them!
4. Walk around your house - what can you hear? Are the sounds louder? Can you hear sounds you haven't heard before?

Your homemade hearing aid works in the same way as your ears - it collects sound waves in the large end of the cone and funnels them into your ears. Because the cone is bigger than your ears, more sound waves can enter your ears. You should be able to hear quiet sounds much more clearly. Try it and see!



Parent-Teacher Meetings

The week after half term we will be holding the first of our Parent-Teacher meetings for this term. These meetings are an important opportunity to discuss your child and how they are getting on at school. The dates for the meetings are Thursday 26th Feb (3.50 - 6.00pm) and Wednesday 4th March (3.50 - 7.30 pm). Please look out for letters about the meetings in your children's book bags next week. Please return the slips on the letters with your preferred day/time to meet by Thursday 12th February so we can allocate times. **Thank you.**

Mobile Phones in school

We have noticed that lots of children are bringing mobile phones to school when they don't actually need them! If your child is in Y5 or Y6 and walks to or from school on their own then they might be in need of a basic mobile phone. All mobile phones should be switched off/on silent during the day and left in the school office.

Children younger than Y5/6 should not have mobile phones in school.



'My Maths' and 'Bug Club'

Don't forget to sign on with your child to their Bug Club and My Maths accounts.



MyMaths.co.uk

Governor News

The Governors met on Wednesday 4th February. We discussed the school's most recent results, looking at how we compare with other schools nationally and thinking about our strengths and the areas where we want to improve.

We also formally 'reconstituted' the governing body - the Government has said all governing bodies in England must do this, and it involves looking again how many governors should be on the governing body, and at what types of governor we need, in order to make sure we have the right range of skills to perform our role. We have decided to keep our governing body the same size as it is now. We will also keep four parent governor roles, but in future only three of them will be elected - we will recruit the fourth parent directly, so that we can invite parents who might represent a particular group within the school, or have a particular set of skills that the governing body needs. If you would like to know more about this, you can talk to one of the current parent governors (see <https://ashmeadprimary.wordpress.com/governors/parent-governors/>)

Finally, Carolyn Mumby, one of our longest standing governors, has decided to step down as a full governor. We are delighted that she will remain involved as an associate governor, which means that she will still attend some meetings and we can continue to benefit from her experience.

Carolyn says *'It was a tough decision to begin to lessen my involvement with the governing body, due to the demands of my expanding business and the need to maintain a better work/life balance. I think we have a strong team of committed governors genuinely offering both support and rigorous challenge. Sean and Jane along with the teaching and support staff are transparent dedicated and a delight to work with. Its a privilege to witness Ashmead continuing to develop so positively to ensure all the children flourish.'*

Carolyn has been a governor at Ashmead for 7 years (including 2 years as Chair) and we would like to thank her for her support.

